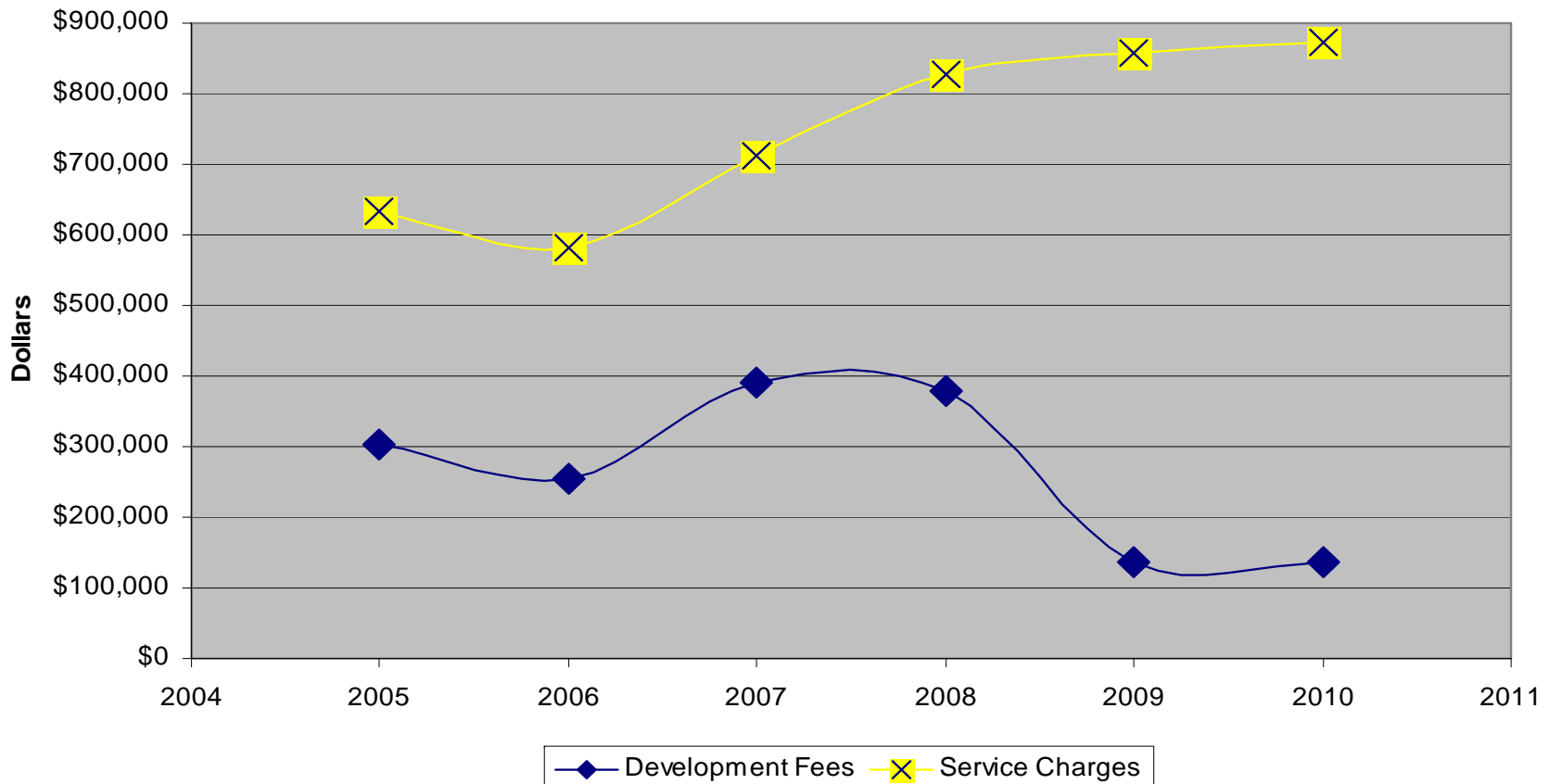


# Water Rate Study

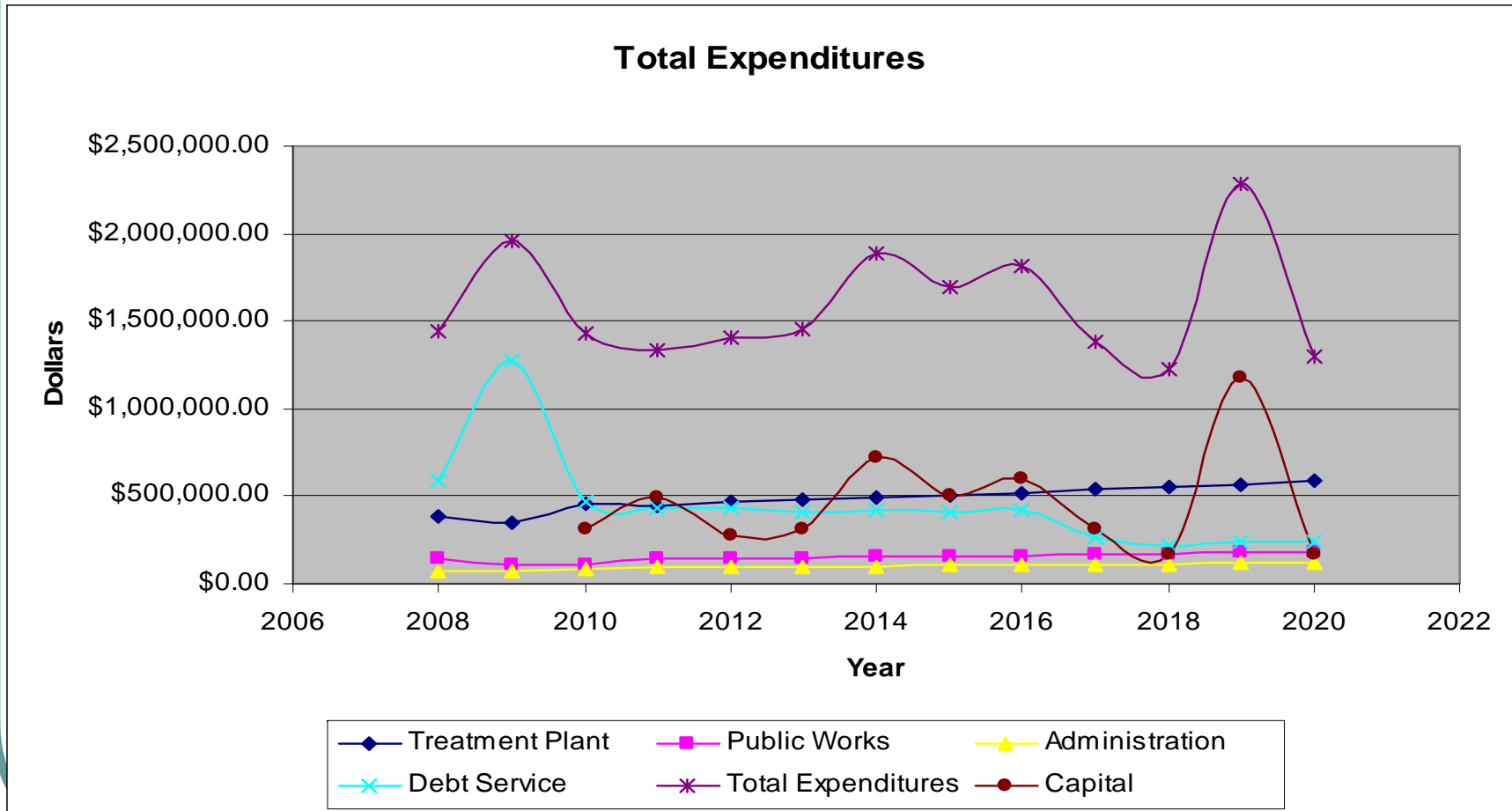


March 15, 2011 – Council Meeting & Public Hearing

# Service charges steadily increase vs. uncertainty of development fees

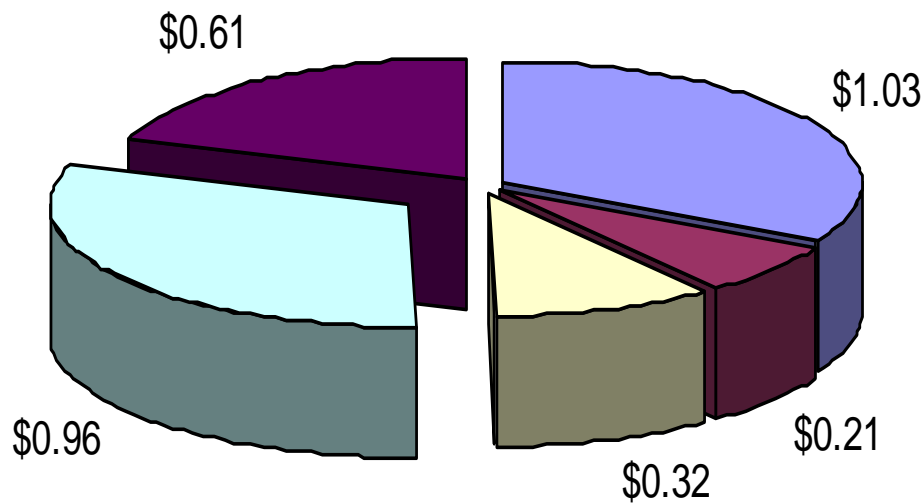


# Total Expenditures – Rate increase driven by Capital & Debt Service



# Water cost is \$3.11 / thousand gallons billed

Cost per 1,000 gallons of water

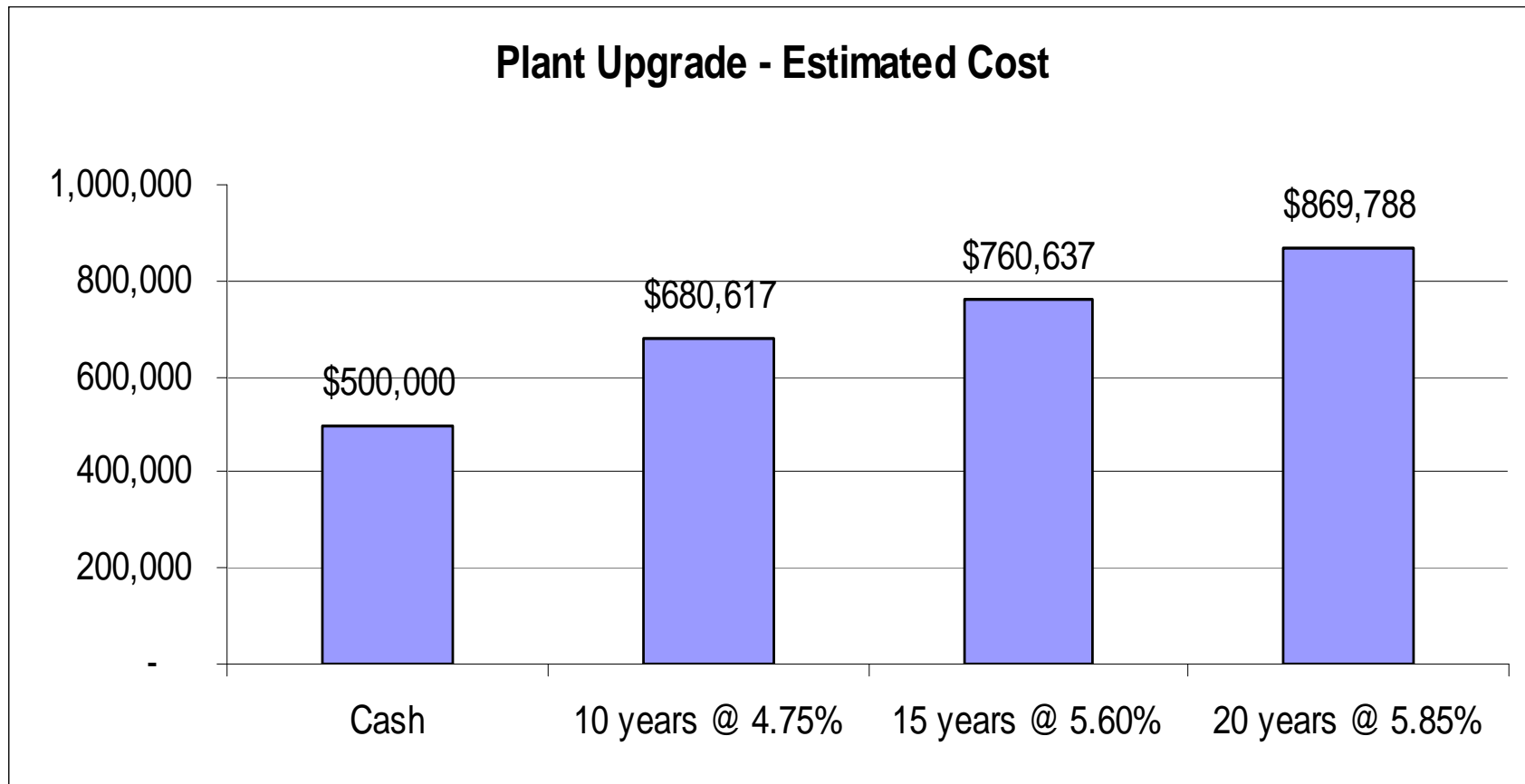


- Plant operation, maintenance and repair
- Public works operation, maintenance and repair
- Capital
- Management and administration
- Debt Service

# Future debt service & capital needs

- On-going debt service
  - 2007 Bonds require nearly ~\$400k annually through 2016, then drops to ~\$200k
  - 2010 drinking water revolving fund loan will require ~ \$35k annually
  - 2001 DOLA loan requires ~ \$14k
- New projects:
  - Filter bed media replacement, underdrains, troughs will cost \$500k to \$800k (2013-2014)
  - Backup power, SCADA, telemetry (various)
  - Waterline upgrades for fire flows (various)
  - Flocculation / sedimentation equipment (2019)

# Financing capital projects increases total costs



# Rate Comparisons

Typical Residential Using 30,000 per Quarter

