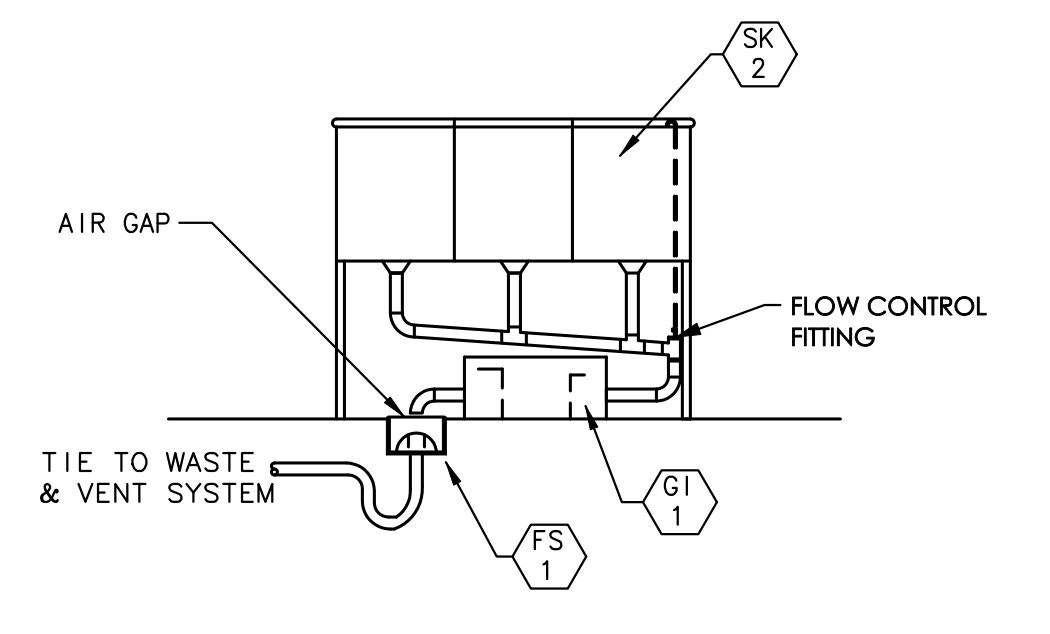
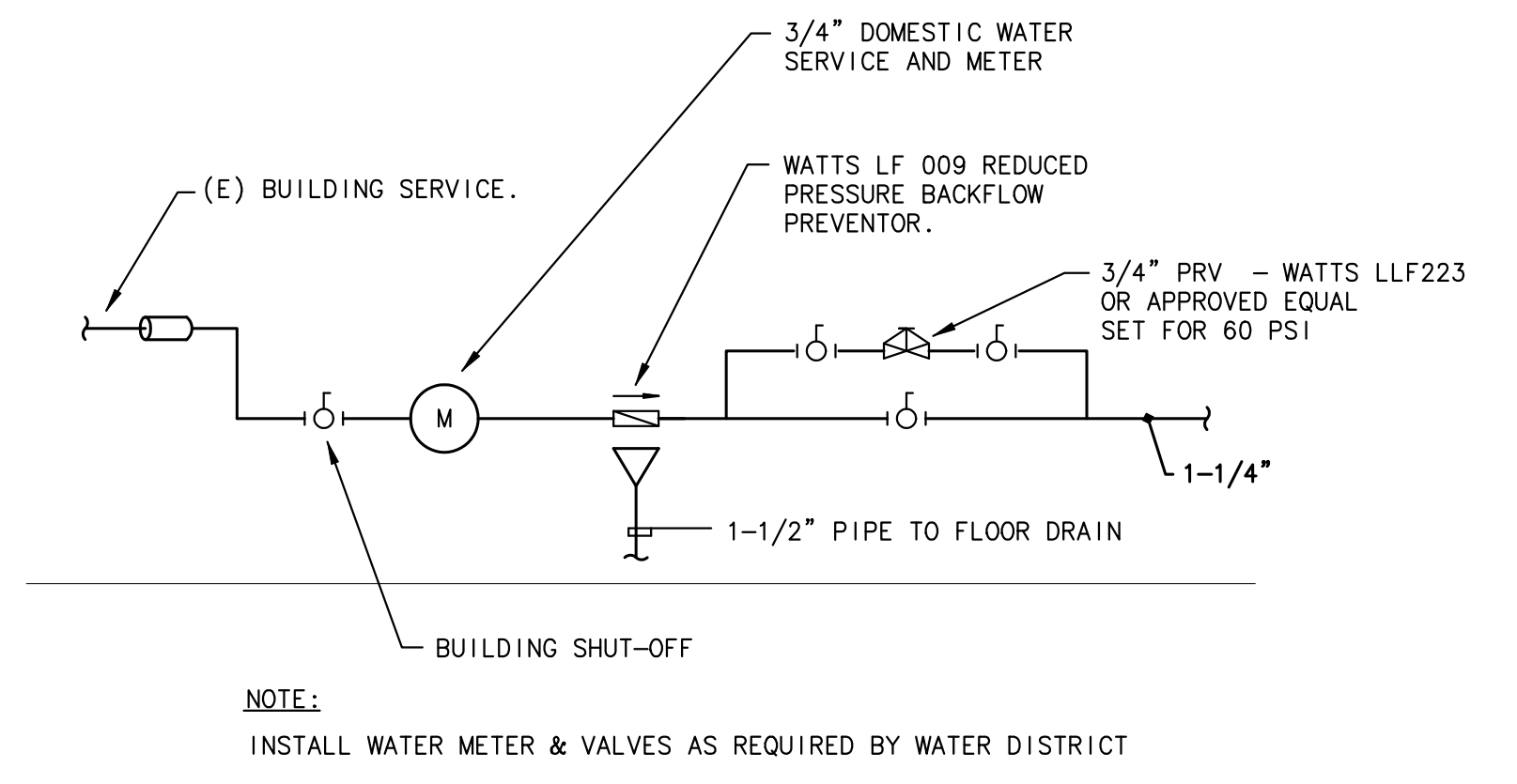


UPPER LEVEL PLUMBING FLOOR PLAN
SCALE: 1/4"=1'-0"



GREASE TRAP INSTALLATION DETAIL
NOT TO SCALE



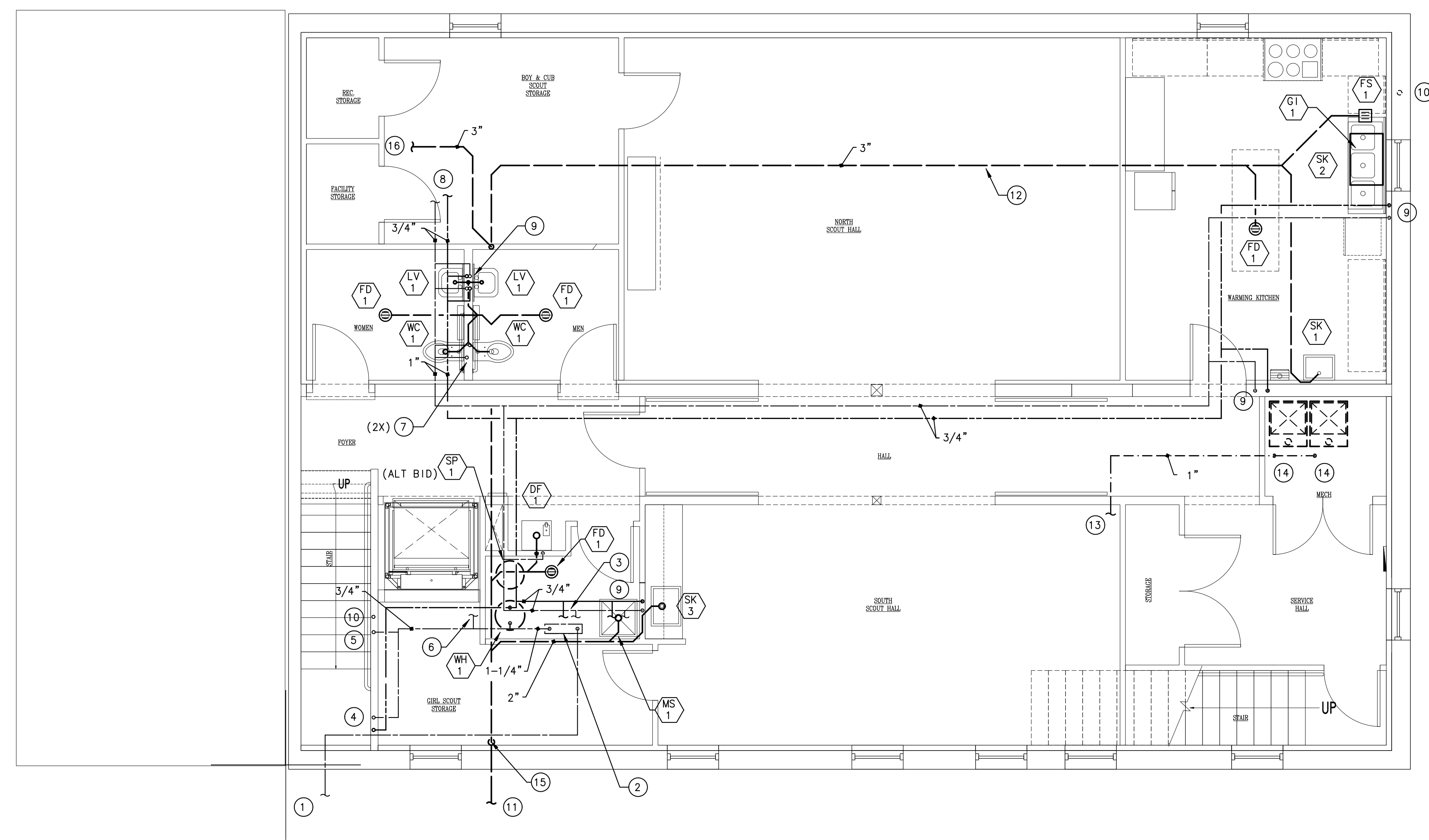
DOMESTIC WATER SERVICE ENTRANCE DETAIL
NOT TO SCALE

GENERAL NOTES

1. ALL WORK SHALL CONFORM TO REQUIREMENTS OF GOVERNING CODE AUTHORITIES.
2. ALL WORK SHALL COMPLY WITH AND BE COORDINATED WITH REQUIREMENTS OF ARCHITECTURAL PLANS AND EXISTING CONSTRUCTION AT THE TIME OF INSTALLATION.
3. THE PLUMBING SUB-CONTRACTOR SHALL FIELD VERIFY ALL EXISTING CONDITIONS TO THE EXTENT POSSIBLE PRIOR TO SUBMITTING A BID FOR THE WORK. UNEXPECTED CONDITIONS FOUND AFTER THE START OF DEMOLITION THAT HAVE AN EFFECT ON THE COST AND COMPLETION SCHEDULE SHALL BE BROUGHT IMMEDIATELY TO THE ATTENTION OF THE GENERAL CONTRACTOR.
4. INSTALL NEW FIXTURES TO BE READILY ACCESSIBLE FOR SERVICE AND MAINTENANCE. REVIEW PROPOSED INSTALLATION WITH OWNER AND CONSTRUCTION MANAGER PRIOR TO STARTING WORK.
5. REVIEW INSTALLATION AND ANY PROPOSED PLAN DEVIATIONS WITH OWNER AND ARCHITECT PRIOR TO STARTING WORK.
6. UNLESS OTHERWISE NOTED, ALL DOMESTIC HW / CW PIPING SERVING TWO OR MORE FIXTURES SHALL BE 3/4".
7. INSULATE DOMESTIC HOT WATER PIPING WITH 1/2" THICK CLOSED CELL FOAM PRE-FORMED PIPE INSULATION WITH SELF SEALING LAP - SIMILAR TO ARMAFLEX.
8. DETAILED VENT PIPING FOR EACH FIXTURE IS NOT SHOWN. INSTALL VENT SYSTEM PER THE REQUIREMENTS OF THE 2015 INTERNATIONAL PLUMBING CODE AND EXTEND AS REQUIRED TO VENT RISERS.
9. NOT ALL PIPING OFFSETS AND TRANSITIONS REQUIRED TO INSTALL THE WORK IN THE AVAILABLE SPACE ARE SHOWN ON THIS DRAWING. FIELD MEASURE FOR EXACT REQUIREMENTS AND INSTALL ACCORDINGLY.
10. FD-1 TRAP PRIMERS SHALL BE SIMILAR TO ZURN MODEL 21022. INSTALL WARMING KITCHEN TRAP PRIMER ON CW SERVICE TO KS-3. INSTALL RESTROOM TRAP PRIMERS ON CW SERVICE TO ONE LAVATORY IN UPPER AND LOWER RESTROOM GROUPS. COORDINATE TRAP PRIMER WALL ACCESS DOOR INSTALLATION WITH GENERAL CONTRACTOR.

PLAN NOTES

1. EXISTING DOMESTIC WATER SERVICE ENTRANCE. FIELD VERIFY LOCATION. LOCATION.
2. INSTALL NEW WATER SERVICE FROM POINT OF BUILDING SERVICE ENTRY. RE: SERVICE ENTRY SCHEMATIC, THIS DRAWING.
3. EXTEND 1/2" HW / CW UP TO SERVE SK-4 ABOVE.
4. EXTEND 1/2" HW / CW UP TO SERVE LV-1 ABOVE.
5. EXTEND 1/2" CW UP TO SERVE WC-1 ABOVE.
6. EXTEND 3/4" CW UP IN WALL ABOVE TO SERVE HB-1.
7. EXTEND 1/2" CW DN IN WALL TO SERVE WC-1.
8. EXTEND 3/4" HW / CW TO SERVE EXISTING NORTHWEST FIXTURES TO REMAIN. FIELD VERIFY CONNECTION POINT IN CEILING SPACE OF SCOUT FOYER ENTRANCE.
9. EXTEND 1/2" HW / CW DN IN WALL. ROUTE HORIZONTALLY AS REQUIRED IN WALL TO MAKE CONNECTION WITH SINK.
10. EXTEND 2" VENT UP IN WALL ABOVE. RE: DWG UPPER LEVEL PLBG PLAN FOR CONTINUATION.
11. EXISTING SANITARY SEWER. FIELD VERIFY LOCATION, INVERT, AND SIZE PRIOR TO STARTING NEW WORK.
12. EXTEND 3" SANITARY SEWER BELOW GRADE FROM WARMING KITCHEN TO POINT OF CONNECTION WITH EXISTING. CUT LOWER LEVEL FLOOR AS REQUIRED (NOT LESS THAN 18" WIDE) AND REMOVE MATERIAL AS REQUIRED FOR INSTALLATION. BACKFILL WITH 3/4" MINUS CRUSHED GRAVEL.
13. FIELD VERIFY LOCATION OF (E) GAS SERVICE PIPING TO (E) FURNACE LOCATIONS.
14. CONNECT TO (E) AND EXTEND 1" GAS PIPE TO NEW FURNACE LOCATIONS. MAKE 3/4" TAP TO EACH FURNACE.
15. EXTEND 4" SS DN FROM ABOVE.
16. EXISTING WASTE PIPING FROM UPPER LEVEL RESTROOMS SHALL BE RE-MOVED AND RE-INSTALLED AS REQUIRED TO RAISE THE BOTTOM OF THE WASTE LINES ABOVE THE CEILING IN THE SCOUT FOYER. EXTEND NEW 3" WASTE TO NEW RISER AS SHOWN.
17. EXTEND 2" VENT UP IN WALL ABOVE.
18. EXISTING SANITARY SEWER. FIELD VERIFY LOCATION, INVERT, AND SIZE PRIOR TO STARTING NEW WORK.
19. EXTEND 3" SANITARY SEWER BELOW GRADE FROM WARMING KITCHEN TO POINT OF CONNECTION WITH EXISTING. CUT LOWER LEVEL FLOOR AS REQUIRED (NOT LESS THAN 18" WIDE) AND REMOVE MATERIAL AS REQUIRED FOR INSTALLATION. BACKFILL WITH 3/4" MINUS CRUSHED GRAVEL.
20. FIELD VERIFY LOCATION OF (E) GAS SERVICE PIPING TO (E) FURNACE LOCATIONS.
21. CONNECT TO (E) AND EXTEND 1" GAS PIPE TO NEW FURNACE LOCATIONS. MAKE 3/4" TAP TO EACH FURNACE.
22. EXTEND 4" SS DN FROM ABOVE.
23. EXISTING WASTE PIPING FROM UPPER LEVEL RESTROOMS SHALL BE RE-MOVED AND RE-INSTALLED AS REQUIRED TO RAISE THE BOTTOM OF THE WASTE LINES ABOVE THE CEILING IN THE SCOUT FOYER. EXTEND NEW 3" WASTE TO NEW RISER AS SHOWN.
24. EXTEND 2" VENT UP IN EXTERIOR WALL FROM BELOW. OFFSET IN CEILING SPACE AS REQUIRED TO PROVIDE 36" CLEARANCE FROM ROOF EDGE. INCREASE TO 3" AND EXTEND UP THROUGH ROOF.
25. EXTEND 2" VENT UP IN WALL FROM BELOW. MAKE CONNECTIONS FROM THIS INCREASE TO 3", AND EXTEND UP THROUGH ROOF.
26. EXTEND 3" SANITARY WASTE DN AGAINST EXTERIOR WALL OF GIRL SCOUT STORAGE ROOM BELOW. RE: LOWER LEVEL PLUMBING PLAN FOR CONTINUATION.



LOWER LEVEL PLUMBING FLOOR PLAN
SCALE: 1/4"=1'-0"

BURGGRAAF ASSOCIATES INC.
CONSULTING ENGINEERS
1404 Hawk Parkway, Suite 218
MONTE ROSE, COLORADO 81401
(970) 240-5990
m.burrgraaf@baai-eng.biz

SALIDA CITY SCOUT HUT RENOVATION
210 E. SACKETT AVE.
SALIDA, COLORADO

REVISION NO.	DATE
BID SET	10/05/16
ADDENDUM #1	10/13/16
ADDENDUM #2	10/21/16

DRAWING TITLE:
PLUMBING FLOOR PLANS AND DETAILS

DATE: 01/05/17
SCALE: 1/4" = 1'-0"
PROJ. NO: 6030
DRAWN BY: BA
CHKD BY: MAP

DRAWING NO.
P-1
OF 2

DIVISION 15 – PLUMBING INSTALLATION SPECIFICATIONS

- A. ALL GENERAL CONDITIONS LISTED ON THE MECHANICAL DRAWINGS SHALL APPLY TO THE WORK OF THE PLUMBING SUB-CONTRACT.
- B. DOMESTIC WATER, WASTE AND VENT PIPING
- INSTALL TYPE L, DRAWN COPPER TUBE WITH WROUGHT COPPER FITTINGS AND SOLDER JOINTS ABOVE GROUND, WITHIN BUILDING.
 - INSTALL AQUAPEX PIPING FROM MANIFOLD LOCATIONS TO FIXTURES PER PLUMBING PIPING SCHEMATIC.
 - INSTALL PVC DWV WITH SOLVENT FUSED JOINTS FOR WASTE AND VENT PIPING.
- C. INSTALLATION OF UNDERGROUND BUILDING DRAINS
- GRADE TRENCH BOTTOMS TO PROVIDE A SMOOTH, FIRM, AND STABLE FOUNDATION, FREE FROM ROCK, THROUGHOUT THE LENGTH OF THE PIPE.
 - REMOVE UNSTABLE, SOFT, AND UNSUITABLE MATERIALS AT THE SURFACE UPON WHICH PIPES ARE TO BE LAID AND BACKFILL WITH CLEAN SAND OR PEA GRAVEL TO INDICATED INVERT ELEVATION.
 - INSTALL UNDERGROUND BUILDING DRAINS TO CONFORM WITH THE PLUMBING CODE. LAY UNDERGROUND BUILDING DRAINS BEGINNING AT LOW POINT OF SYSTEMS, TRUE TO GRADES AND ALIGNMENT INDICATED WITH UNBROKEN CONTINUITY OF INVERT. PLACE BELL ENDS OF PIPING FACING UPSTREAM. INSTALL REQUIRED GASKETS IN ACCORDANCE WITH MANUFACTURER'S RECOMMENDATIONS FOR USE OF LUBRICANTS, CEMENTS, AND OTHER SPECIAL INSTALLATION REQUIREMENTS. MAINTAIN SNAKE OR DRAG IN LINE AND PULL PAST EACH JOINT AS IT IS COMPLETED.
 - INSTALL BUILDING DRAIN PITCHED DOWN AT MINIMUM SLOPE OF 1/4 INCH PER FOOT (2 PERCENT) FOR PIPING 3 INCH AND SMALLER, AND 1/8 INCH PER FOOT (1 PERCENT) FOR PIPING 4 INCH AND LARGER.
 - PIPING RUNOUTS TO FIXTURES: PROVIDE DRAINAGE AND VENT PIPING RUNOUTS TO PLUMBING FIXTURES AND DRAINS, WITH APPROVED TRAP, OF SIZES INDICATED; BUT IN NO CASE SMALLER THAN REQUIRED BY THE PLUMBING CODE.
- D. L.P. GAS PIPE INSTALLATION
- INSTALL STEEL PIPE WITH THREADED JOINTS AND MALLEABLE IRON FITTINGS FOR 2 INCH AND SMALLER.
 - DRIPS AND SEDIMENT TRAPS: INSTALL A DRIP LEG AT POINTS WHERE CONDENSATE MAY COLLECT, AT THE OUTLET OF THE GAS METER, AND IN A LOCATION READILY ACCESSIBLE TO PERMIT CLEANING AND EMPTYING. DO NOT INSTALL DRIPS WHERE CONDENSATE IS LIKELY TO FREEZE.
 - CONSTRUCT DRIPS AND SEDIMENT TRAPS USING A TEE FITTING WITH THE BOTTOM OUTLET PLUGGED OR CAPPED. USE A MINIMUM OF 3 PIPE DIAMETERS IN LENGTH FOR THE DRIP LEG. USE SAME SIZE PIPE FOR DRIP LEG AS THE CONNECTED PIPE.
 - CONNECT BRANCH OUTLET PIPES FROM THE TOP OR SIDES OF HORIZONTAL LINES, NOT FROM THE BOTTOM.
 - INSTALL UNIONS IN PIPES 2 INCH AND SMALLER, ADJACENT TO EACH VALVE AND AT FINAL CONNECTIONS EACH PIECE OF EQUIPMENT.
- E. FIELD QUALITY CONTROL – WATER DISTRIBUTION PIPING
- INSPECTIONS: INSPECT WATER DISTRIBUTION PIPING AS FOLLOWS:
 - DO NOT ENCLOSE, COVER, OR PUT INTO OPERATION WATER DISTRIBUTION PIPING SYSTEM UNTIL IT HAS BEEN INSPECTED AND APPROVED BY THE AUTHORITY HAVING JURISDICTION.
 - DURING THE PROGRESS OF THE INSTALLATION, NOTIFY THE PLUMBING OFFICIAL HAVING JURISDICTION AT LEAST 24 HOURS PRIOR TO THE TIME SUCH INSPECTION MUST BE MADE. PERFORM TESTS SPECIFIED BELOW IN THE PRESENCE OF THE PLUMBING OFFICIAL.
 - ROUGH-IN INSPECTION: ARRANGE FOR INSPECTION OF THE PIPING SYSTEM BEFORE CONCEALED OR CLOSED IN AFTER SYSTEM IS ROUGHED IN AND PRIOR TO SETTING FIXTURES.
 - FINAL INSPECTION: ARRANGE FOR A FINAL INSPECTION BY THE PLUMBING OFFICIAL TO OBSERVE THE TESTS SPECIFIED BELOW AND TO ENSURE COMPLIANCE WITH THE REQUIREMENTS OF THE PLUMBING CODE.
 - REINSPECTION: WHENEVER THE PLUMBING OFFICIAL FINDS THAT THE PIPING SYSTEM WILL NOT PASS THE TEST OR INSPECTION, MAKE THE REQUIRED CORRECTIONS AND ARRANGE FOR REINSPECTION BY THE PLUMBING OFFICIAL.
 - TEST WATER DISTRIBUTION PIPING AS FOLLOWS:
 - TEST FOR LEAKS AND DEFECTS ALL NEW WATER DISTRIBUTION PIPING SYSTEMS.
 - CAP AND SUBJECT THE PIPING SYSTEM TO A STATIC WATER PRESSURE OF 50 PSIG ABOVE THE OPERATING PRESSURE WITHOUT EXCEEDING THE PRESSURE RATING OF THE PIPING SYSTEM MATERIALS. ISOLATE THE TEST SOURCE AND ALLOW TO STAND FOR 4 HOURS. LEAKS AND LOSS IN TEST PRESSURE CONSTITUTE DEFECTS THAT MUST BE REPAIRED.
 - REPAIR ALL LEAKS AND DEFECTS WITH NEW MATERIALS AND RETEST SYSTEM OR PORTION THEREOF UNTIL SATISFACTORY RESULTS ARE OBTAINED.
- F. FIELD QUALITY CONTROL – WASTE AND VENT PIPING
- INSPECTIONS
 - DO NOT ENCLOSE, COVER, OR PUT INTO OPERATION DRAINAGE AND VENT PIPING SYSTEM UNTIL IT HAS BEEN INSPECTED AND APPROVED BY THE AUTHORITY HAVING JURISDICTION.
 - DURING THE PROGRESS OF THE INSTALLATION, NOTIFY THE PLUMBING OFFICIAL HAVING JURISDICTION, AT LEAST 24 HOURS PRIOR TO THE TIME SUCH INSPECTION MUST BE MADE, PERFORM TESTS SPECIFIED BELOW IN THE PRESENCE OF THE PLUMBING OFFICIAL.
 - ROUGH-IN INSPECTION: ARRANGE FOR INSPECTION OF THE PIPING SYSTEM BEFORE CONCEALED OR CLOSED-IN AFTER SYSTEM IS ROUGHED-IN, AND PRIOR TO SETTING FIXTURES.
 - FINAL INSPECTION: ARRANGE FOR A FINAL INSPECTION BY THE PLUMBING OFFICIAL TO OBSERVE THE TESTS SPECIFIED BELOW AND TO INSURE COMPLIANCE WITH THE REQUIREMENTS OF THE PLUMBING CODE.
 - REINSPECTION: WHENEVER THE PIPING SYSTEM FAILS TO PASS THE TEST OR INSPECTION, MAKE THE REQUIRED CORRECTIONS, AND ARRANGE FOR REINSPECTED BY THE PLUMBING OFFICIAL.
 - REPORTS: PREPARE INSPECTION REPORTS, SIGNED BY THE PLUMBING OFFICIAL.
 - PIPING SYSTEM: TEST DRAINAGE AND VENT SYSTEM IN ACCORDANCE WITH THE PROCEDURES OF THE AUTHORITY HAVING JURISDICTION, OR IN THE ABSENCE OF A PUBLISHED PROCEDURE, AS FOLLOWS:
 - TEST FOR LEAKS AND DEFECTS ALL NEW DRAINAGE AND VENT PIPING SYSTEMS AND PARTS OF EXISTING SYSTEMS, WHICH HAVE BEEN ALTERED, EXTENDED OR REPAIRED.
 - ROUGH PLUMBING TEST PROCEDURE: EXCEPT FOR OUTSIDE LEADERS AND PERFORATED OR OPEN JOINTED DRAIN TILE, TEST THE PIPING OF PLUMBING DRAINAGE AND VENTING SYSTEMS UPON COMPLETION OF THE ROUGH PIPING INSTALLATION. TIGHTLY CLOSE ALL OPENINGS IN THE PIPING SYSTEM, AND FILL WITH WATER TO THE POINT OF OVERFLOW, BUT NOT LESS THAN 10 FEET HEAD OF WATER. WATER LEVEL SHALL NOT DROP DURING THE PERIOD FROM 15 MINUTES BEFORE THE INSPECTION STARTS, THROUGH COMPLETION OF THE INSPECTION. INSPECT ALL JOINTS FOR LEAKS.
 - REPAIR ALL LEAKS AND DEFECTS USING NEW MATERIALS AND RETEST SYSTEM OR PORTION THEREOF UNTIL SATISFACTORY RESULTS ARE OBTAINED.
- G. FIELD QUALITY CONTROL – NATURAL GAS PIPING
- PIPING TESTS: INSPECT, TEST, AND PURGE NATURAL GAS SYSTEMS IN ACCORDANCE WITH NFPA 54 AND LOCAL UTILITY REQUIREMENTS.

PLUMBING FIXTURES

- NOTE: FIXTURE AND EQUIPMENT SPECIFICATIONS ARE INTENDED TO ESTABLISH A STANDARD OF CAPACITY AND QUALITY. THE PLUMBING SUBCONTRACTOR MAY SUBSTITUTE ALTERNATE EQUIPMENT PROVIDED THAT IT MEET THE SAME STANDARD OF CAPACITY AND QUALITY.
- THE PLUMBING SUB-CONTRACTOR SHALL BE RESPONSIBLE FOR OBTAINING APPROVAL OF THE ENGINEER FOR ANY SUBSTITUTE EQUIPMENT PRIOR TO INSTALLATION.
- THE PLUMBING SUB-CONTRACTOR SHALL BE RESPONSIBLE FOR ANY AND ALL ADDITIONAL COST ASSOCIATED WITH THE INSTALLATION OF SUBSTITUTED EQUIPMENT.
- DF-1 DRINKING FOUNTAIN
HANS MODEL 1107
WALL MOUNTED, BARRIER FREE, 14 GAUGE SATIN FINISH STAINLESS STEEL, 100% LEAD FREE WATERWAYS.
PROVIDE COMPLETE WITH MODEL 6800 IN-WALL SUPPORT FRAME, 1-1/4" P-TRAP, AND 1/2" CW SUPPLY / STOP.
- FD-1 FLOOR DRAIN
ZURN Z415B
DURA-COATED CAST IRON BODY WITH BOTTOM OUTLET, COMBINATION INVERTIBLE MEMBRANE CLAMP AND ADJUSTABLE COLLAR WITH SEEPAGE SLOTS AND "TYPE B" POLISHED NICKEL BRONZE, LIGHT DUTY STRAINER AND TRAP PRIMER CONNECTION.
- FS-1 FLOOR SINK
ZURN Z1900
SANI-FLOOR RECEPTOR 12" x 12" x 6" DEEP CAST IRON BODY AND SQUARE, LIGHT DUTY GRATE W/ SLOTTED OPENINGS, WHITE ACID RESISTING PORCELAIN ENAMEL INTERIOR AND TOP, COMPLETE WITH WHITE ABS ANTI-SPLASH INTERIOR BOTTOM DOME STRAINER, AND TRAP PRIMER CONNECTION.
- GI-1 GREASE INTERCEPTOR
ZURN MODEL GT-2701-20
20 GPM FLOW RATE
40 LB GREASE CAPACITY
- HB-1 WALL HYDRANT
WOODFORD MODEL MB224
INTEGRAL WATER SUPPLY STOP, ANTI-SIPHON, VACUUM BREAKER PROTECTED, MODULAR BOX
- LV-1 LAVATORY – WALL MOUNT, ACCESSIBLE
STERLING MODEL 442034
VITREOUS CHINA, 4" FAUCET CENTER HOLES
PROVIDE COMPLETE WITH ZURN Z1231 CONCEALED ARM CARRIER, MOEN 8413FDS SINGLE HANDLE FAUCET, GRID DRAIN, 1-1/2" P-TRAP WITH OFFSET AS REQUIRED AND ANGLE SUPPLIES AND STOPS
COLOR: WHITE
- MS-1 MOP SINK
FLORESTONE MODEL MSR 2424 – 24" x 24" x 10" DEEP
PROVIDE COMPLETE W/ KOHLER K-8907SERVICE SINK FAUCET, GRID DRAIN STRAINER, 1-1/2" P-TRAP AND ANGLE SUPPLIES AND STOPS
- SK-1 SINGLE COMPARTMENT SINK – WALL MOUNT – WARMING KITCHEN
JUST MODEL A-18665-TMX
23" x 18-1/2" x 12 DEEP
14 GAUGE 304 STAINLESS STEEL
PROVIDE COMPLETE WITH JLK-400 MIXING FAUCET WITH HOSE END SPOUT AND PAIL HOOK, 2" TRAP, WALL BRACKETS AND WALL CLIPS
- SK-2 TRIPLE COMPARTMENT SINK – WARMING KITCHEN
ADVANCE TABCO MODEL FS-3-1818
(3) 18" x 18" x 14" DEEP COMPARTMENTS
23.5" x 59" OVERALL
14 GAUGE STAINLESS STEEL
PROVIDE COMPLETE WITH 2-HOLE BACKSPLASH PUNCHING, K-1 FAUCET WITH 12" SWING SPOUT, ANGLE SUPPLIES AND STOPS, AND DRAIN STOPPERS.
- SK-3 SINGLE COMPARTMENT SINK (SOUTH SCOUT HALL)
STERLING MODEL 14710-3
20 GAUGE, SELF RIMMING – 25" x 22" x 7" DEEP
PROVIDE COMPLETE WITH MOEN CAB7526 SINGLE HANDLE FAUCET GRID DRAIN STRAINER, 1-1/2" P-TRAP, AND ANGLE SUPPLIES AND STOPS.
- SK-4 SINGLE COMPARTMENT SINK (MAIN HALL)
STERLING MODEL 14710-3
20 GAUGE, SELF RIMMING – 25" x 22" x 7" DEEP
PROVIDE COMPLETE WITH MOEN CAB7011SRS SINGLE HANDLE FAUCET GRID DRAIN STRAINER, 1-1/2" P-TRAP, AND ANGLE SUPPLIES AND STOPS.
- WC-1 WATER CLOSET – ACCESSIBLE
PROFLO MODEL PF9412/PF9403
ELONGATED, 1.28 GPF
PROVIDE COMPLETE WITH OPEN FRONT SEAT AND SUPPLY WITH STOP
COLOR – WHITE
- WH-1 ELECTRIC WATER HEATER
STATE MODEL ESW-30-DOL3
30 GALLON STORAGE
4500 WATTS, 230 VOLTS
PROVIDE COMPLETE WITH AMTROL ST-5-C EXPANSION TANK
- SP-1 GRINDER PACKAGE LIFT STATION – ALTERNATE BID ITEM
ZOELLER MODEL 915 GRINDER PACKAGE
PROVIDE COMPLETE WITH:
– ZOELLER MODEL 915 GRINDER PUMP
15 GPM, 18 FT. HD.
– 1/2 HP, 120 VOLT – PLUG-IN
– 18" DIA X 30" DEEP POLYSTRUCTURAL FOAM BASIN
– METAL COVER
– CHECK VALVE
– HIGH WATER ALARM
PLUMBING SUB-CONTRACTOR SHALL PROVIDE ALTERNATE PRICING FOR INSTALLATION OF SP-1.
IF SP-1 ALTERNATE IS TAKEN, WASTE FROM EXISTING MAIN LEVEL RESTROOMS SHALL BE RE-ROUTED TO THE CEILING SPACE OF THE LOWER LEVEL RESTROOMS, CONNECTED TO THE WASTE PIPING FROM THE NEW MAIN LEVEL RESTROOMS AND EXTENDED TO THE CONNECTION WITH THE BUILDING SERVICE WITHOUT CONNECTION TO THE LOWER LEVEL WASTE PIPING. THE NEW LOWER LEVEL WASTE PIPING (KITCHEN, DRINKING FOUNTAIN AND LOWER LEVEL RESTROOMS), SHALL BE ROUTED THROUGH SP-1. THE SP-1 DISCHARGE SHALL BE EXTENDED UP AND CONNECTED TO THE GRAVITY WASTE LINE SERVING THE MAIN LEVEL.

PLUMBING FIXTURE CONNECTION/MOUNTING HEIGHT SCHEDULE						
ITEM	DESCRIPTION	WASTE	VENT	HW	CW	HEIGHT A.F.F.
DF-1	DRINKING FOUNTAIN (HANDICAP UNIT)	1-1/4"	1-1/4"	—	1/2"	ADA
FD-1	FLOOR DRAIN	2"	2"	—	—	—
FD-2	FLOOR DRAIN	2"	—	—	—	—
FS-1	FLOOR SINK	2"	2"	—	—	—
HB-1	WALL HYDRANT	—	—	—	3/4"	12"
LV-1	WALL MOUNT LAVATORY	1-1/2"	1-1/2"	1/2"	1/2"	ADA
MS-1	MOP SINK	2"	1-1/2"	1/2"	1/2"	—
SK-1	SINGLE COMPARTMENT SINK	1-1/2"	1-1/2"	1/2"	1/2"	—
SK-2	TRIPLE COMP SKULLERY SINK	—	—	1/2"	1/2"	—
SK-3	COUNTERTOP SINGLE COMP. SINK	1-1/2"	1-1/2"	1/2"	1/2"	—
SK-4	COUNTERTOP SINGLE COMP. SINK	1-1/2"	1-1/2"	1/2"	1/2"	—
UR-1	URINAL	2"	1-1/2"	—	3/4"	ADA
WC-1	WATER CLOSET – TANK TYPE	3"	2"	—	1/2"	17"

B A I
BURGGRAAF ASSOCIATES INC.
CONSULTING ENGINEERS
1404 Hawk Parkway, Suite 218
MONTESSO, COLORADO 81401
(970) 240-5990
m.burgraaf@baai-eng.biz

SALIDA CITY SCOUT HUT RENOVATION
210 E. SACKETT AVE.
SALIDA, COLORADO

REVISION NO.	DATE
BID SET	10/05/16
ADDENDUM #2	10/21/16

DRAWING TITLE:
PLUMBING FIXTURE LIST, CONNECTION SCHEDULE AND INSTALLATION SPECIFICATIONS

DATE: 01/06/17
SCALE: N.T.S.
PROJ. NO: 6030
DRAWN BY: BAI
CHKD BY: MAB

DRAWING NO.
P-2
OF 2