

MAIN LEVEL MECHANICAL FLOOR PLAN

SCALE: 1/4"=1'-0"

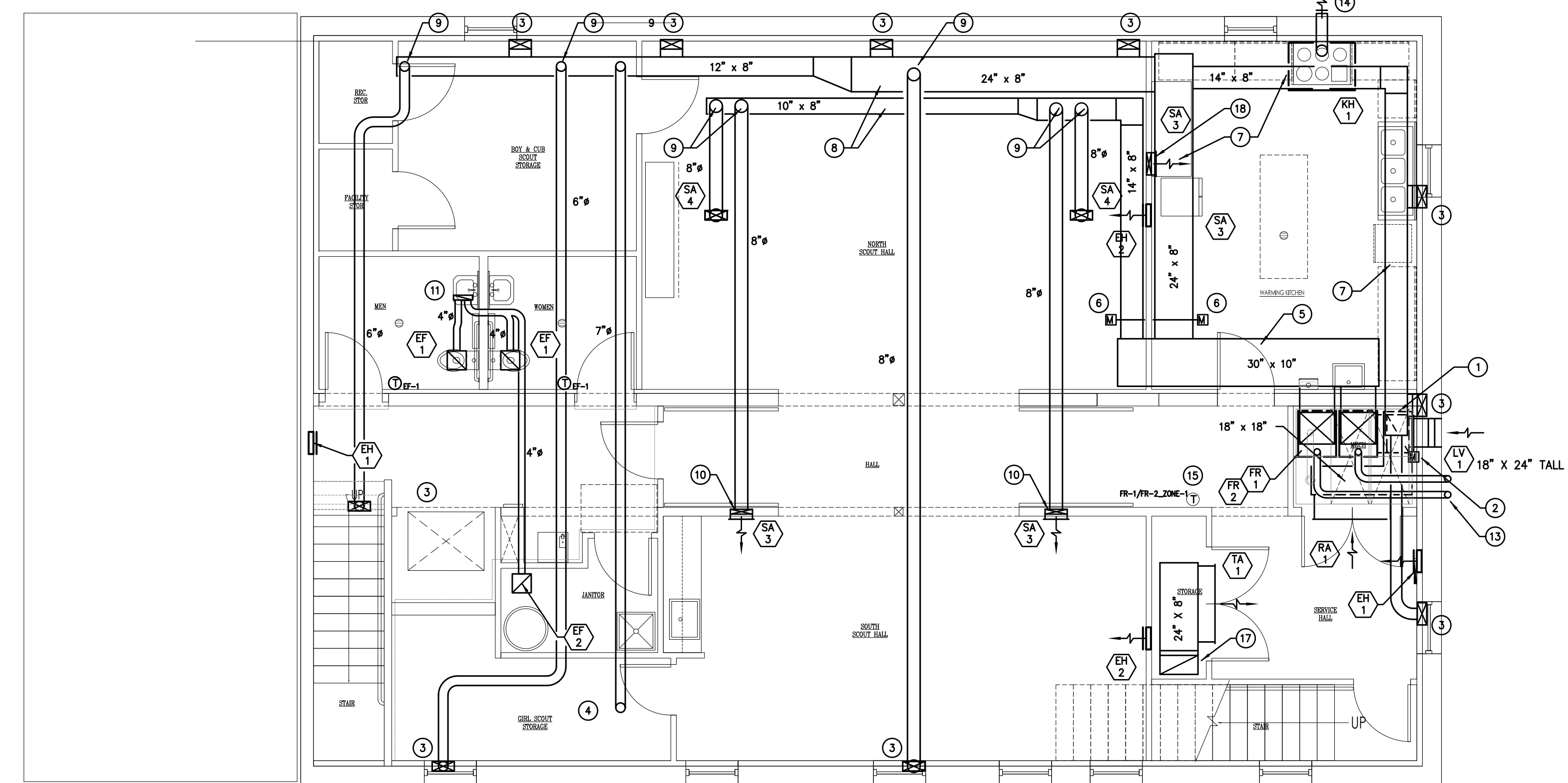
PLAN NOTES

1. EXTEND 14" x 18" R/A DUCT DN NEXT TO EXTERIOR WALL. ROUTE BELOW FURNACES FOR BOTTOM R/A CONNECTION.
2. MAKE 18" x 24" O/A DUCT CONNECTION TO VERTICAL R/A DUCT. INSTALL MOTORIZED DAMPER IN O/A DUCT.
3. MAKE S/A CONNECTION TO FLOOR REGISTER PLENUM ABOVE.
4. MAKE S/A CONNECTION TO KICKSPACE GRILL PLENUM ABOVE.
5. INSTALL 30" x 10" S/A DUCT WITHOUT LINER. HOLD DUCT TIGHT TO CEILING. COORDINATE INSTALLATION WITH SOFFIT FRAMING (BY OTHERS).
6. COORDINATE INSTALLATION OF DAMPER MOTOR WITH G.C. AND EXISTING STRUCTURE. PROVIDE CEILING OR SOFFIT ACCESS DOOR FOR MOTOR SERVICE.
7. SUPPLY AIR DUCT IN KITCHEN SHALL BE CONCEALED IN SOFFIT. HOLD DUCT TIGHT TO CEILING STRUCTURE AND AS CLOSE AS POSSIBLE TO EXTERIOR WALL TO MINIMIZE SOFFIT SIZE.
8. SUPPLY AIR TRUNK DUCT IN NORTH SCOUT HALL, SCOUT STORAGE SHALL BE EXPOSED. HOLD DUCTWORK TIGHT TO UNDERSIDE OF CEILING STRUCTURE AND AS CLOSE AS POSSIBLE TO NORTH EXTERIOR WALL.
9. MAKE TOP TAP TO TRUNK DUCT AND ROUTE S/A RUN-OUT DUCT THROUGH EXISTING STRUCTURE.
10. EXTEND 3" x 12" S/A BOOT DOWN IN WALL TO HIGH-WALL REGISTER INSTALLED AT 7'-0" A.F.F. TO BOTTOM.
11. EXTEND 3" x 12" E/A DUCT UP IN INTERIOR WALL ABOVE. RE: DWG M-2 FOR CONTINUATION.
12. EXTEND 4" E/A DUCT UP IN WALL ABOVE. RE: DWG M-2 FOR CONTINUATION.
13. EXTEND 6" TYPE "B" VENT UP ON EXTERIOR OF BUILDING. RE: DWG M-2 FOR CONTINUATION.
14. EXTEND 7" EXHAUST HORIZONTALLY TO EXTERIOR WALL. TERMINATE AT 12" ABOVE FINISHED GRADE.
15. INSTALL LOWER LEVEL ZONE THERMOSTAT WITH LOCKING COVER.
16. EXTEND 7" S/A DUCT HORIZONTALLY IN FLOOR JOISTS BELOW SERVING AREA ABOVE.
17. EXTEND 24" x 12" R/A DUCT DOWN FROM RA-2 ABOVE. TRANSITION TO 24" x 8" AND ROUTE HORIZONTALLY TIGHT TO CEILING JOIST IN CLOSET.
18. TAP 14" x 3" S/A INTO 14" x 8" TRUNK DUCT. EXTEND INTO WALL BETWEEN KITCHEN AND NORTH SCOUT HALL. MAKE CONNECTION TO SA-3 (INSTALL AS HIGH AS POSSIBLE IN KITCHEN - BELOW DUCT SOFFIT)
19. TERMINATE E/A DUCT THROUGH EXTERIOR WALL W/ PAINTABLE WALL CAP. FIELD VERIFY THAT TERMINATION IS MORE THAN 3'-0" FROM EXTERIOR DOORS.
20. EXTEND 3" x 12" E/A DUCT UP IN INTERIOR WALL FROM BELOW. TRANSITION TO 8" IN CEILING SPACE AND ROUTE THROUGH ROOF AND TERMINATE WITH LOW SILHOUETTE ROOF CAP.
21. INSTALL LOCKING COVER FOR THERMOSTAT
22. EXTEND 8" TYPE "B" VENTS UP FROM BELOW ON EXTERIOR OF BUILDING. INSTALL STAND-OFFS AND THIMBLES AS REQUIRED TO MAINTAIN 1" CLEARANCE FROM COMBUSTIBLE CONSTRUCTION. EXTEND UP THRU ROOF AND TERMINATE WITH WEATHER CAP. COORDINATE INSTALLATION W/ G.C.

GENERAL NOTES

(APPLICABLE TO ALL MECHANICAL DRAWINGS)

1. ALL WORK SHALL COMPLY WITH AND BE COORDINATED WITH REQUIREMENTS OF ARCHITECTURAL PLANS AND EXISTING CONSTRUCTION AT THE TIME OF INSTALLATION.
2. INSTALL EQUIPMENT TO BE READILY ACCESSIBLE FOR SERVICE AND MAINTENANCE. REVIEW PROPOSED INSTALLATION WITH OWNER AND ARCHITECT PRIOR TO STARTING WORK.
3. ALL WORK SHALL CONFORM TO REQUIREMENTS OF GOVERNING CODE AUTHORITIES.
4. MAKE ALL DUCT CONNECTIONS TO FURNACES AND EXHAUST FANS WITH FLEXIBLE CONNECTIONS.
5. COORDINATE FINAL CEILING GRILLE AND EXHAUST FAN LOCATIONS WITH GENERAL CONTRACTOR AND LIGHTING LAYOUT PRIOR TO ROUGH-IN.
6. SEAL ALL DUCT JOINTS AND CONNECTIONS TO EQUIPMENT AIR TIGHT.
7. NOT ALL DUCTWORK OFFSETS AND TRANSITIONS REQUIRED TO INSTALL THE WORK IN THE AVAILABLE SPACE ARE SHOWN ON THIS DRAWING. FIELD MEASURE FOR EXACT REQUIREMENTS AND INSTALL ACCORDINGLY.
8. UNLESS OTHERWISE NOTED, ALL FLOOR, CEILING AND WALL REGISTERS SHALL BE INSTALLED WITH FACE ADJUSTABLE OPPOSED BLADE DAMPERS. PROVIDE ADD ALTERNATE PRICING TO DELETE OPPOSED BLADE DAMPERS AND INSTALL REMOTE BALANCING DAMPERS APPROXIMATELY 36" FROM EACH GRILLE.
9. PAINT ALL DUCTWORK VISIBLE BEHIND AIR DEVICES MATTE BLACK.
10. ALL DUCT DIMENSIONS NOTED ARE CLEAR INSIDE. UNLESS OTHERWISE NOTED, ALL RECTANGULAR SUPPLY AND RETURN AIR DUCTWORK SHALL BE GALVANIZED SHEET METAL WITH 1/2" 3# FIBERGLASS DUCT LINING.
11. FLEX DUCTS SHALL BE INSULATED, NOT MORE THAN 5'-0" LONG; TAPE OFF ALL RAW EDGES OF INSULATION.
12. OUTSIDE AIR DUCTS SHALL BE INSULATED WITH 1" EXTERIOR DUCT WRAP, R8.0 MINIMUM.
13. INSULATE RIGID ROUND DUCTS EXTERNALLY WITH R-6.0 "INSUL-SLEEVE".
14. LINE ALL SUPPLY AND RETURN AIR REGISTER / GRILLE PLENUMS WITH 1/2" 3# DENSITY DUCT LINER.
15. INSTALL DUCTWORK PER SMACNA STANDARDS.
16. ALL THERMOSTAT WIRES SHALL BE ROUGHED IN USING 6-WIRE CABLE.
17. PROVIDE FOR AIR SIDE TEST AND BALANCE AT COMPLETION OF PROJECT.



LOWER LEVEL MECHANICAL FLOOR PLAN

SCALE: 1/4"=1'-0"

BAI

BURGGRAAF ASSOCIATES INC.
CONSULTING ENGINEERS
1404 Hawk Parkway, Suite 218
MONTROSE, COLORADO 81401
(970) 240-8980 mburgraaf@aol.com

SALIDA CITY SCOUT HUT RENOVATION
210 E. SACKETT AVE.
SALIDA, COLORADO

REVISION NO.	DATE
BID SET	01/05/17

DRAWING TITLE:
LOWER LEVEL MECHANICAL PLAN

DATE: 01/05/17
SCALE: 1/4" = 1'-0"
PROJ NO: 6020
DRAWN BY: BAI
CHKD BY: MAB

DRAWING NO.

M-1

OF 3